

The YewdaleDefiant® range of fabrics are a diverse and comprehensive collection suited to nearly every application. From offices to homes, hospitals to schools, the YewdaleDefiant® fabric range is ideal for any project.



YewdaleDefiant® dart fabric

The YewdaleDefiant® Dart fabric is designed for areas where a high level of light exclusion is required along with exceptional performance characteristics. The flame retardant fibreglass composition with a PVC coating for easy clean, ensures this fabric is suitable for almost all applications. With 13 colours and the most advanced range of fabric widths available, fabric joins are kept to a minimum to assist in wastage, design and speed of fabrication. This fabric contains Biosafe® which is the international accreditation standard of our proven antimicrobial formula that has been tested under the most stringent measures to ensure effective inhibition of infection.

- Fabric Composition:** 4-ply; 75% PVC, 25% Fibreglass
- Fabric Range:** 13
- Louvre Widths:** 127mm (5")
89mm (3.5")
- Vertical Roll Length:** 100m
- Roller Fabric Width:** 1830mm (72")
2500mm (98.4")
3000mm (118.11")
- Roller Fabric Length:** 30m
- Fabric Thickness:** 0.25mm - 0.33mm
- Fabric Weight:** 407 g/m² - 12oz/syd
- Fire Retardancy:** Conforms to BS5867, Part 2: Type B 2008 Blackout. Suitable for computer environments
- Shading:** Suitable for moist conditions
- Moisture Resistance:** Incorporates Biosafe® formula
- Anti Bacterial:** Wipe clean with a mild 5% detergent solution
- Care Instructions:**



this fabric range comes with a full LIFETIME Warranty as standard.

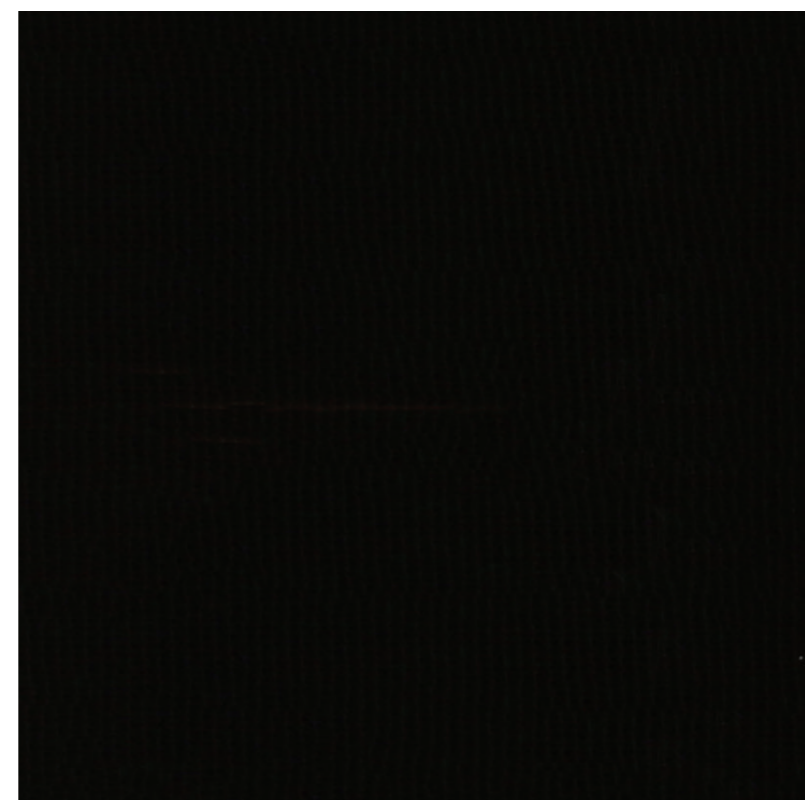
this fabric range comes with a full BIOSAFE® Accreditation as standard.

CI/SFB 1976 reference by SFB Agency		
(76.7)	X	

White

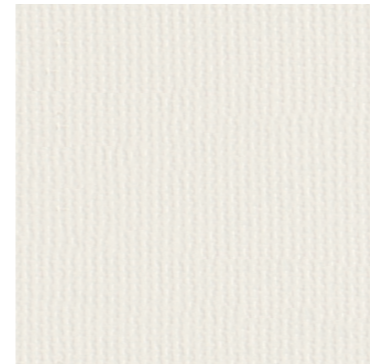


Black White



dart

Vanilla



Beige



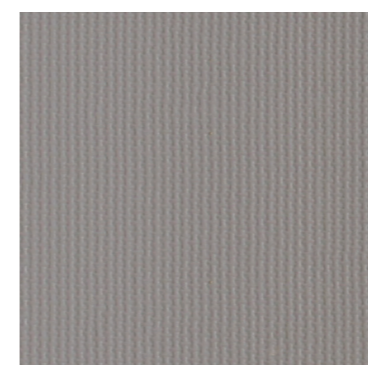
Magnolia



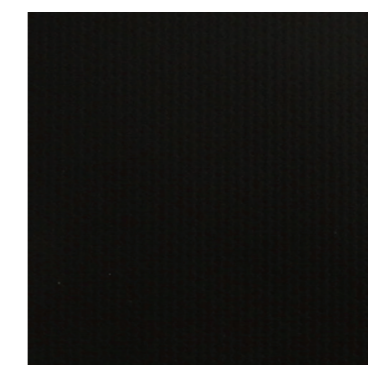
Grey



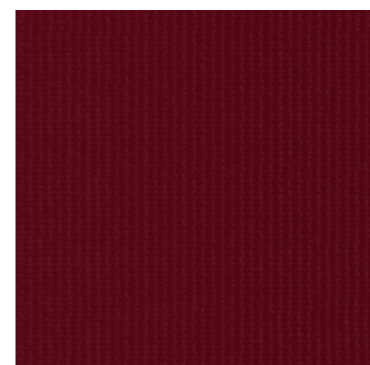
Iron



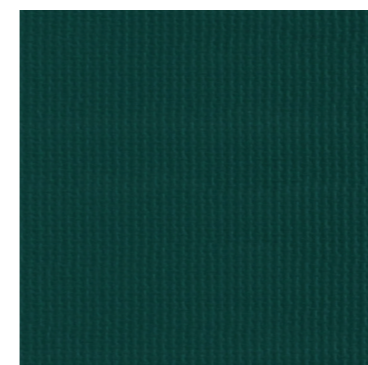
Black



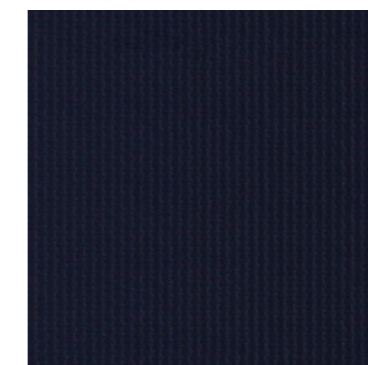
Burgundy



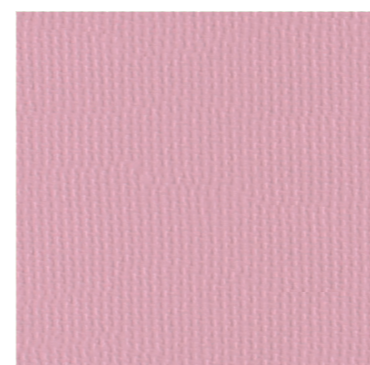
Bottle Green



Navy



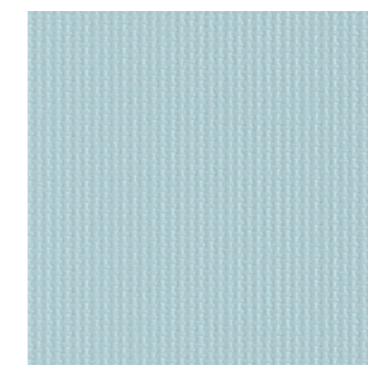
Pink



Mint Green



Sea Blue



YewdaleDefiant® dart fabric

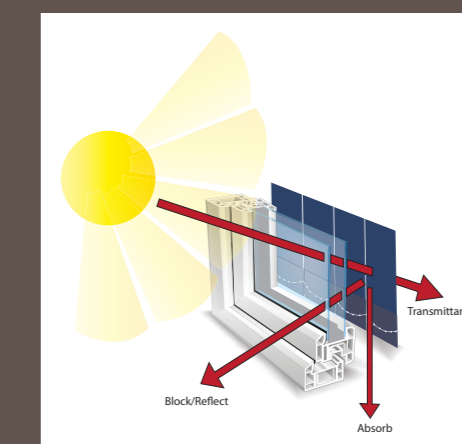
shading efficiency

Transmittance is the amount of light and heat transmitted beyond the fabric. The lower the amount, the greater the efficiency.

Block/reflect is the amount of heat and light that is blocked or reflected. The higher the amount, the greater the efficiency.

Absorption is the amount of heat and light absorbed in the fabric. The higher the amount, the lower the efficiency.

Ultraviolet protection illustrates how protective the fabric is against ultraviolet rays. The higher the amount, the greater the effectiveness.



	3000 mm	2500 mm	1830 mm	127mm / 89 mm	Heat Transmittance %	Light Transmittance %	Sun Block %	Ultraviolet Protection %	Absorption %	Heat Reflection %
White					0	0	100	100	27	73
Vanilla					0	0	100	100	30	69
Beige					0	0	100	100	37	63
Magnolia					0	0	100	100	35	65
Grey					0	0	100	100	49	51
Iron					0	0	100	100	71	29
Black					0	0	100	100	95	5
Burgundy					0	0	100	100	83	17
Bottle Green					0	0	100	100	92	8
Navy					0	0	100	100	91	9
Pink					0	0	100	100	34	66
Mint Green					0	0	100	100	34	66
Sea Blue					0	0	100	100	36	64
Black / White					0	0	100	100	27	73

Please enquire about other fabrics that we have available...

